

Component Replacement

- electrical -



Xperia™ ZR
C5502 /C5503/ M36h

CONTENTS

1 Replaceable Components 3

2 Component Placing..... 5

3 Additional Repair info 6

4 Revision History 10

For general information about electrical repair related issues, refer to 1220-1336: Generic Repair Manual - electrical

Test after electrical replacement: refer to 1273-1772 Mechanical Test Instruction

Do not remove shield can lids (Heat pasta are added and RF performance will be damaged)

1 Replaceable Components

EXPLANATION OF ABBREVIATIONS USED IN THE COLUMN 'COMMENTS' BELOW

COMPONENT LOCATION

P = Primary side

S = Secondary side

REPAIR METHOD

HA = Hot Air (removal & mounting)

ST = Soldering Tool (removal & mounting)

HA/ST = Hot Air for removal - Soldering Tool for mounting

BGA = BGA Station

BH = Bottom Heater

ADDITIONAL INFORMATION

⇒1 (2,3,4, etc.) = Proceed to 'Additional Repair Info' for further instructions in the indicated section(s).

Position	Component	Part no.	Comments
F5102	Fuse 0.25A 1.0*0.5mm	1265-7224	P HA+BH ⇒1
F7652	Fuse 0.25A 1.0*0.5mm	1265-7224	P HA+BH ⇒2
L2201	Filter 220ohm 0603 2A 0.05ohm Bead	1001-1896	P HA+BH ⇒3
R1300	Resistor 0.01 Ohm +/-1% 200.0 mW (1.6x0.	1238-2147	S HA+BH ⇒4
X1300	Conn Pogopin Receptacle 5p Battery	1268-3454	S HA+BH or BGA ⇒5
X2200	Conn USB B Receptacle 5p	1268-3388	P HA+BH or BGA ⇒6
X2801	Conn Coax Receptacle 0p test switch	1221-6477	S HA+BH ⇒7
X2802	Conn Coax Receptacle 1p	1261-3585	P HA+BH ⇒8
X2804	Conn Coax Receptacle 0p test switch	1221-6477	S HA+BH ⇒9
X2811	Conn Leaf Spring Receptacle 1p Antenna/G	1238-5879	S HA+BH ⇒10
X3501	Conn Pogopin Plug 1p	1267-0901	S HA+BH ⇒11
X3502	Conn Pogopin Plug 1p	1267-0901	S HA+BH ⇒11
X8001	Conn Coax Receptacle 0p test switch	1221-6477	S HA+BH ⇒12
X8003	Conn Pogopin Plug 1p	1267-0901	S HA+BH ⇒13
X8006	Conn Pogopin Plug 1p	1267-0901	S HA+BH ⇒13
X8400	Conn Pogopin Plug 1p	1267-0901	S HA+BH ⇒14
X8600	Conn Leaf Spring Plug 1p Antenna/Groundi	1238-5876	S HA+BH ⇒15

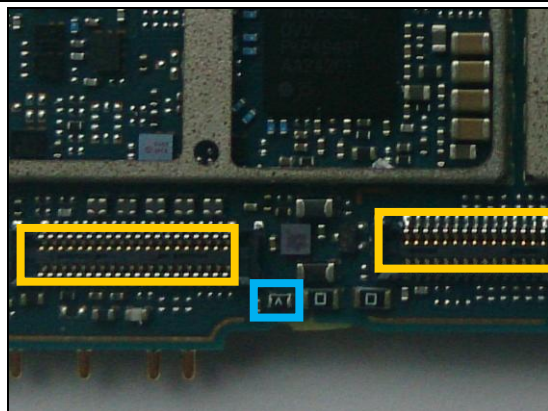


3 Additional Repair info

1

F5102

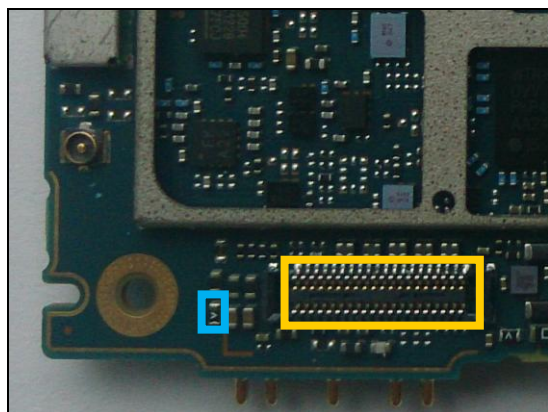
*Replace if open circuit (Vibrator not working)
Protect the BtB connectors with capton tape!*



2

F7652

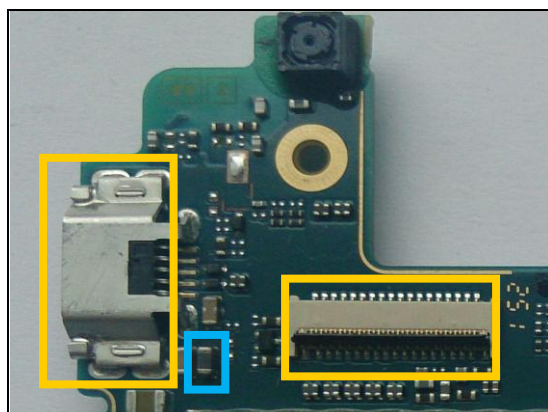
*Replace if open circuit (No display)
Protect the BtB connector with capton tape!*



3

L2201

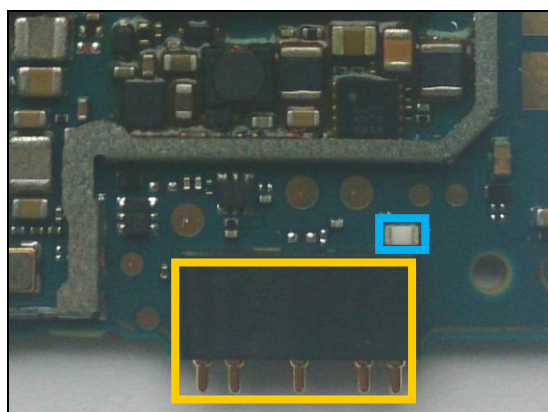
*Replace if open circuit (USB charger not working)
Protect the USB and BtB connectors with capton tape!*



4

R1300

*Replace if open circuit (Phone dead)
Protect the Battery connector with capton tape!*

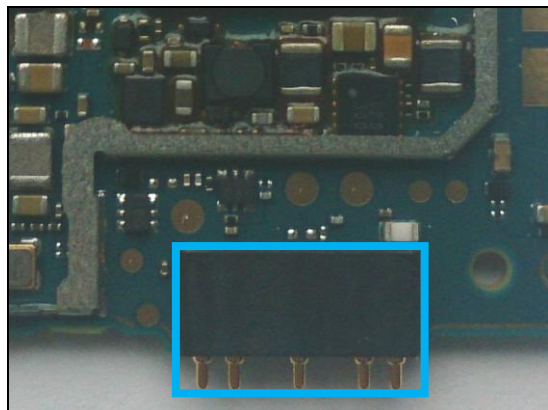


Repair Actions: Additional Repair Info

5

X1300

Replace if mechanical damaged. (Phone dead or power off)

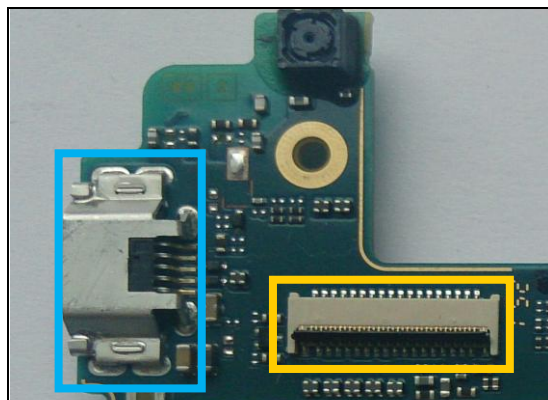


6

X2200

Replace if mechanical damaged (USB charger or data transfer not working)

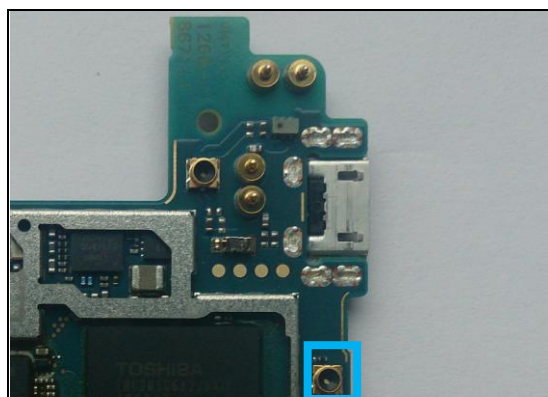
Protect the BtB connector with capton tape!



7

X2801

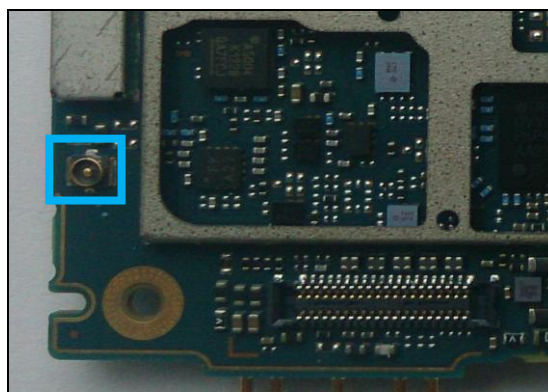
Replace if open circuit 1-2 (No or bad network, main antenna)



8

X2802

Replace if mechanical damaged (No or bad network, main antenna)



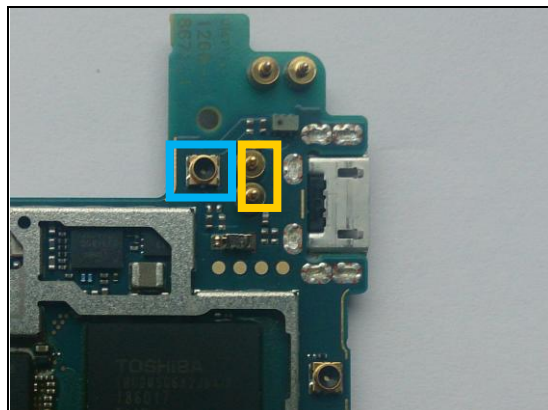
Repair Actions: Additional Repair Info

9

X2804

Replace if open circuit 1-2 (Bad network, secondary antenna)

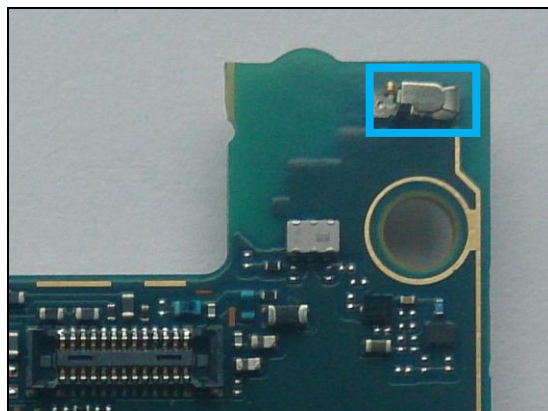
Protect the BtB connectors with capton tape!



10

X2811

Replace if mechanical damaged (Bad network, grounding pins)

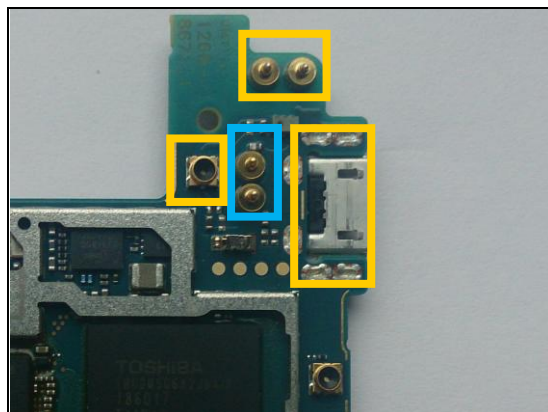


11

X3501, X3502

Replace if mechanical damaged (No ear speaker)

Protect the Coax, USB and BtB connectors with capton tape!

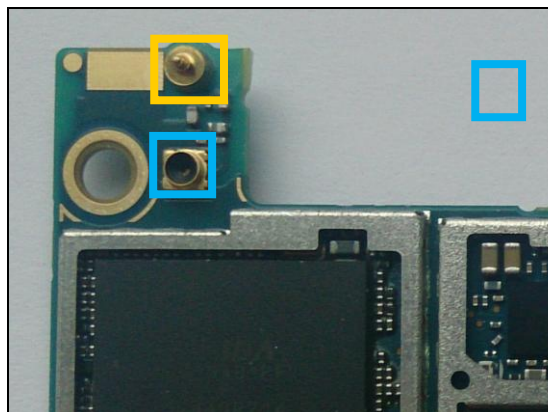


12

X8001

Replace if open circuit 1-2 (no or bad WLAN/ BT/ GPS)

Protect the BtB connector with capton tape!



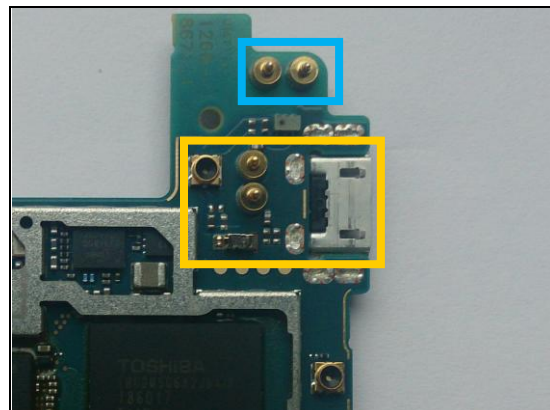
Repair Actions: Additional Repair Info

13

X8003, X8006

Replace if mechanical damaged (Bad network, secondary antenna)

Protect the Coax, USB and BtB connectors with capton tape!

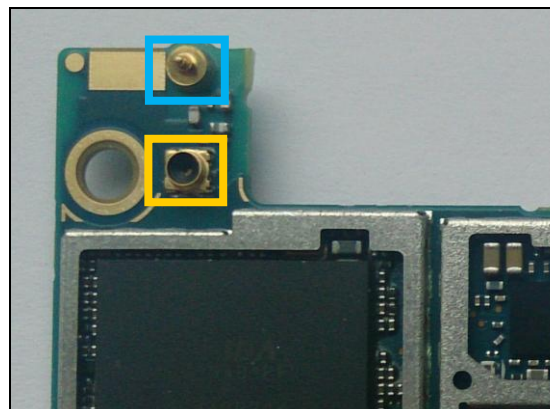


14

X8400

Replace if mechanical damaged (no or bad WLAN/ BT/ GPS)

Protect the Coax connector with capton tape!

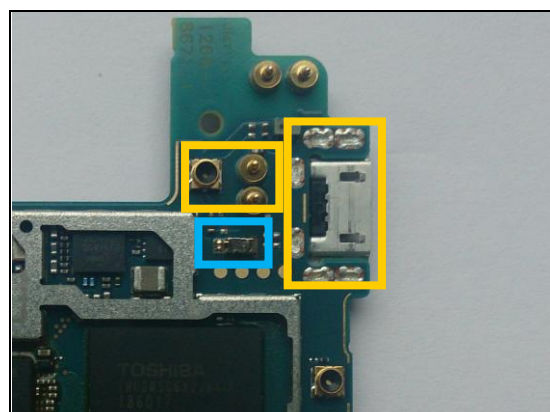


15

X8600

Replace if mechanical damaged (no or bad NFC)

Protect the Coax, USB and BtB connectors with capton tape!



4 Revision History

Rev.	Date	Changes / Comments
1	2014-04-18	Initial release